



2021 SEAS Cup Specific Sailing Instructions

These Specific Sailing Instructions are to be read together with the General Sailing Instructions for SouthEast Alaska Sailing (SEAS). In case of conflict, these Specific Sailing Instructions apply.

SEAS Cup entry requirements:

All entries will pay to race. The entire series = \$50.00 or per race = \$10.00 collected pre-race.

An entry shall consist of a single-hulled sailing boat, a named skipper who shall be at least 21 years of age, and a crew appropriate to the size and equipment of the boat. Boats not previously rated under PHRF by SEAS must fill out the appropriate rating form and submit it at least 48 hours before the race to permit a proper rating. All boats must meet minimum Coast Guard equipment requirements. A 2019 Coast Guard Auxiliary Safety Inspection is also recommended (Besides - they are free!).

There will be a skipper's meeting at 7:30 AM the day of the race to discuss race specific issues, collect entry forms and fees, discuss weather forecasts, provide an opportunity for crew to find a boat, etc. The meeting will occur at Downtown Harbor Office.

All skippers are strongly advised to attend the skipper's meeting. To assist in pre-race planning, and if unable to attend the skippers meeting, skippers with club-membership may pre-register for the individual races at the SEAS website (<http://seasailing.us/>).

Race starts will occur at the times, dates, locations as described below. All racing will cease no later than 2100. Any boat not yet over the respective finish lines will be recorded as a 'did not finish' (DNF). Each boat shall record its time and report to the designated race official ASAP. This can be done by calling the race committee member or emailing your times to commodore@seasailing.us. If times are not received within 24 hours the boat may be disqualified from the race.

COURSE LANDMARKS:

(In "Degrees Decimal Minutes")

Marmion Island Day Mark

Latitude: 58° 11.9167' N
Longitude: 134° 15.4167' W

Scull Island

Latitude: 58° 12.2833' N
Longitude: 134° 38.75' W

Portland Island Light

Latitude: 58° 21.1167' N
Longitude: 134° 45.5333' W

Jaw Point

Latitude: 58° 16.7667' N
Longitude: 134° 04.6667' W

Young Island

Latitude: 58° 11.0667' N
Longitude: 134° 35.5667' W

Clear Point Light

Latitude: 58° 14.6' N
Longitude: 134° 54.9833' W

Grave Point

Latitude: 58° 03.75' N
Longitude: 134° 02.8667' W

Point Hilda

Latitude: 58° 13.1' N
Longitude: 134° 30.3' W

George Rock Light

Latitude: 58° 18.9167' N
Longitude: 134° 42.0333' W

Sheep Creek Light

Latitude: 58° 15.4833' N
Longitude: 134° 19.8667' W

Point Young

Latitude: 58° 11.65' N
Longitude: 134° 33.3833' W

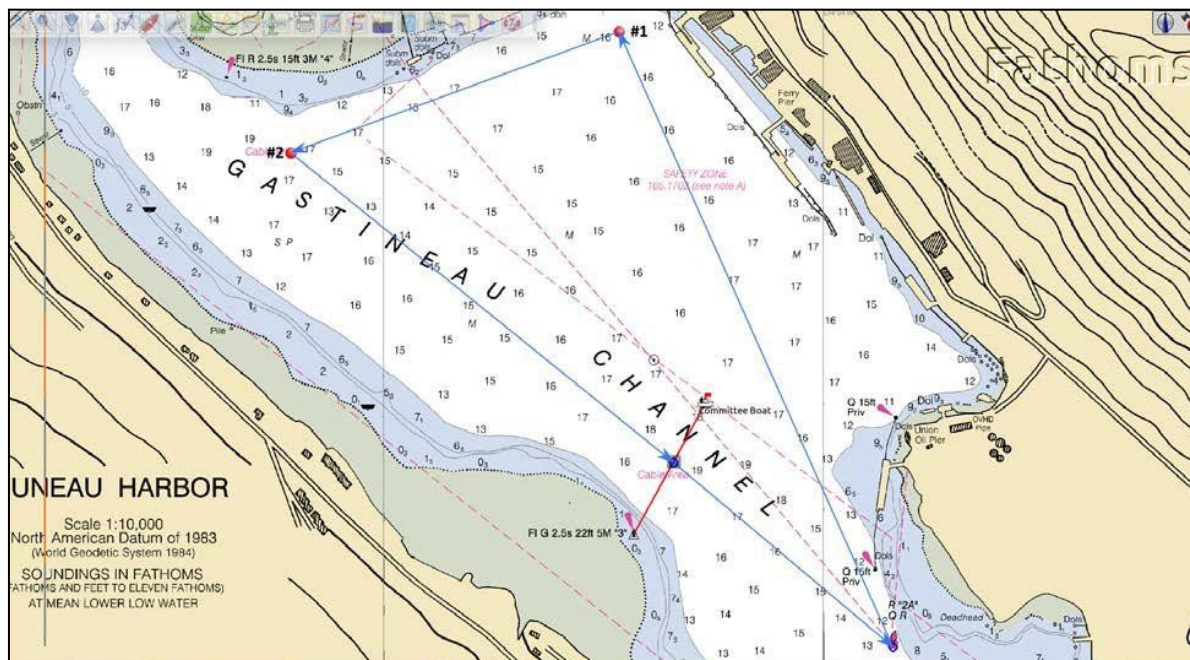


Specific Events Start and Finish Lines

Round 1: Maritime Festival Buoy Race

Saturday May 2, 2021

Leg 1 (Saturday) - Starting a 12:00 pm between the Committee boat and the Lawson Creek Navigation Mark #3, proceed southeast towards the red navigation can. After rounding the can head north to float buoy #1 off the floatplane flight deck. After rounding float buoy #1, continue west towards float buoy #2 off the mouth of Gold Creek. Round float buoy #2 and continue southeast finishing across the line between the committee boat and the Lawson Creek Navigation Mark.

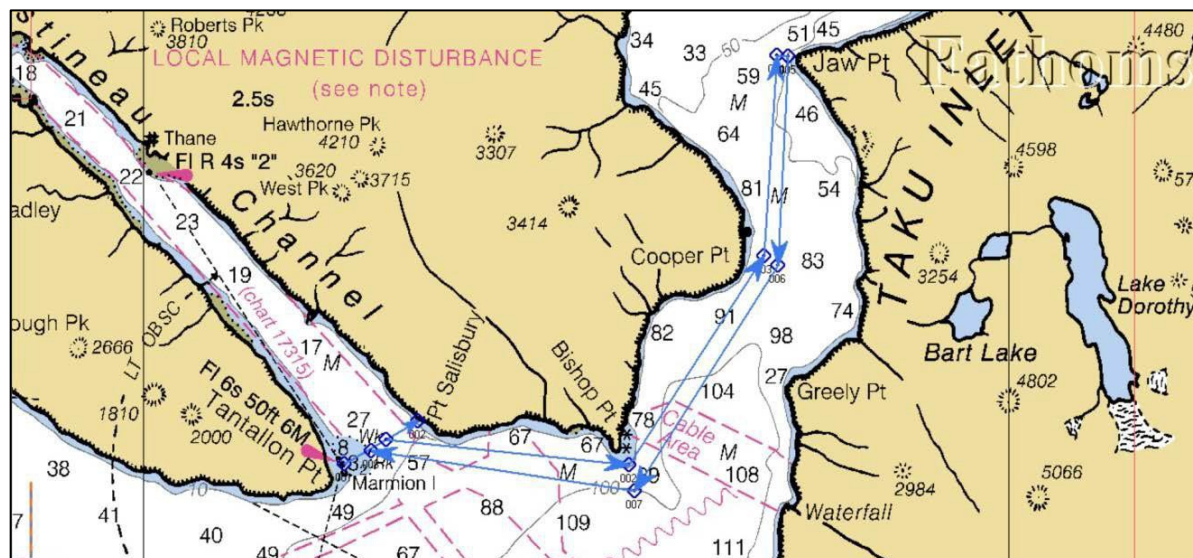


Round 2: Skipper's Choice #1- 1 Leg

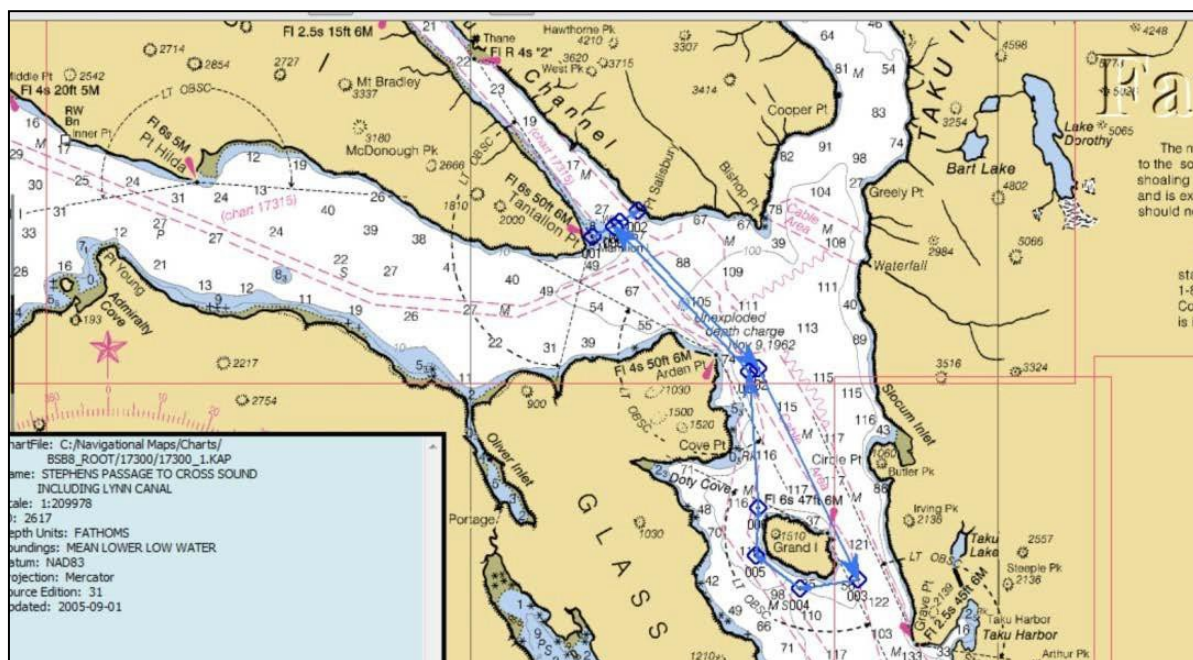
Saturday May 15, 2021

Starting at 10:00 a.m. between the Committee boat and the Marmion Island Day Mark (an imaginary line bearing 240 magnetic to, and within ½ mile of the mark), the boats will sail **ONE** of these courses:

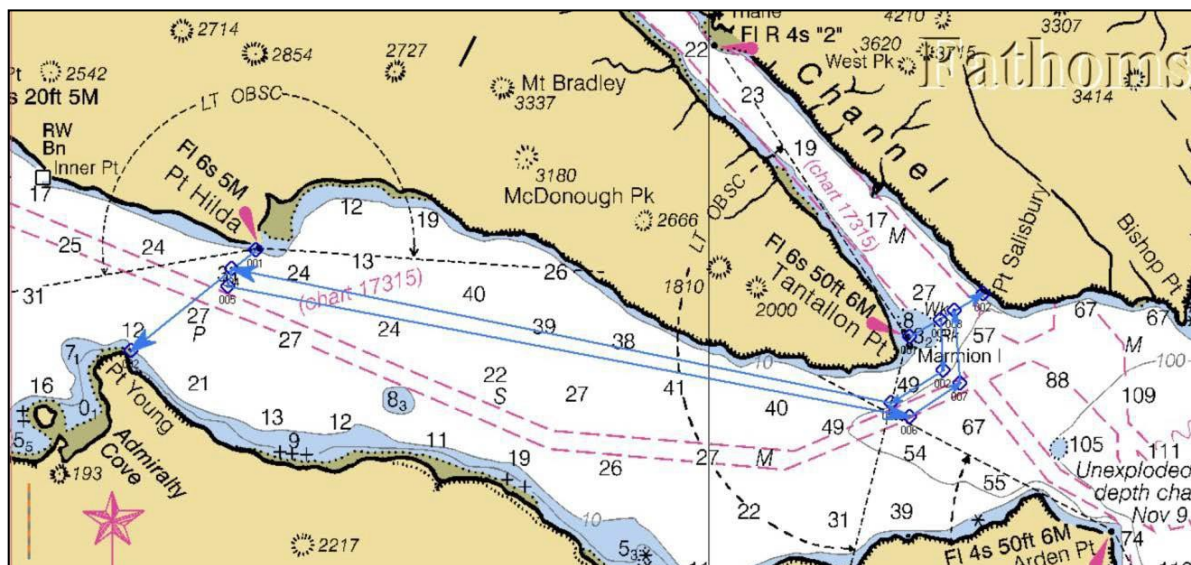
- A. North into Taku Inlet, crossing an imaginary line bearing 60 magnetic to, and within ½ mile of Jaw Point, returning and crossing an imaginary line bearing 240 magnetic to, and within ½ mile of the Marmion Island Day mark.



- B. South into Stephens Passage, rounding Grand Island to either port or starboard (Skipper's choice), returning and crossing an imaginary line bearing 240 magnetic to, and within $\frac{1}{2}$ mile of the Marmion Island Day mark.



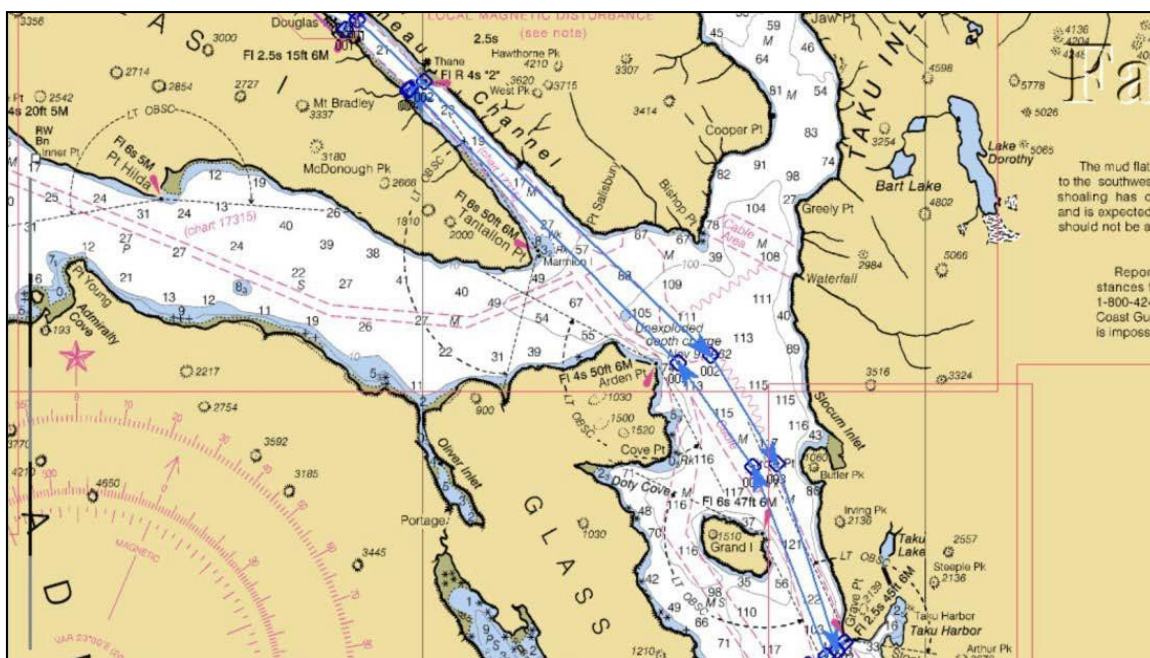
- C. West into Stephens Passage, crossing an imaginary line between Pt. Hilda and Pt. Young, returning and crossing an imaginary line bearing 240 magnetic to, and within $\frac{1}{2}$ mile of the Marmion Island Day mark.



Round 3: Jay Ginter Memorial Day Regatta - 3 legs

May 29-31, 2021

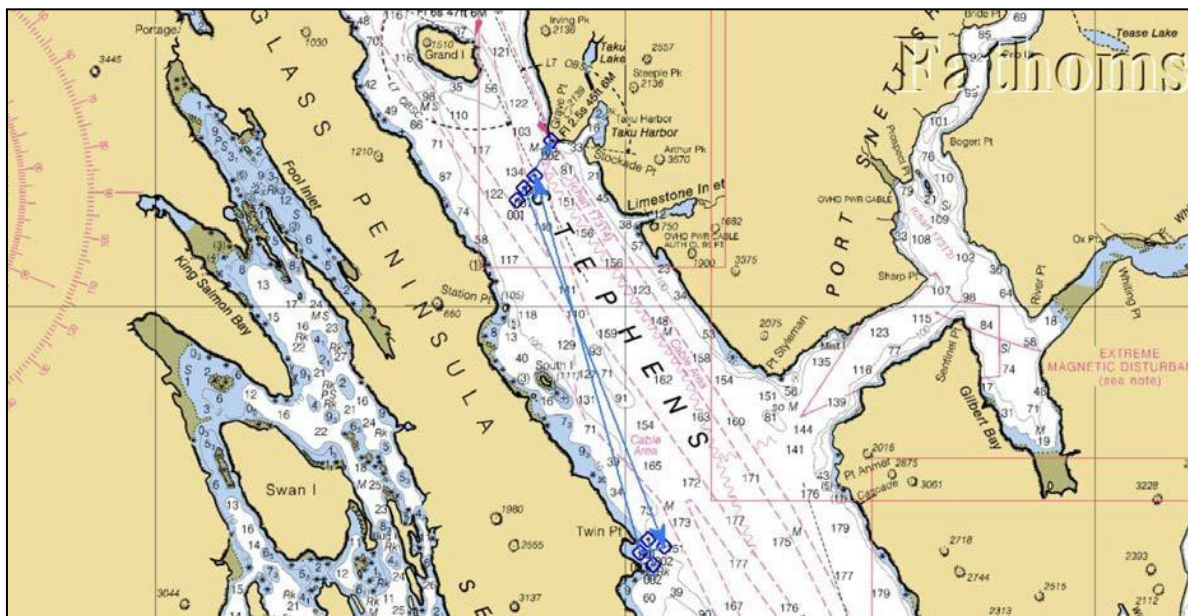
Leg 1 (Saturday) - Starting at 9:30 a.m. between the Committee Boat (the last satellite earth station at the end of the Rock Dump) and the Mayflower Island Day Mark, proceed south down Gastineau Channel, then south across Taku Inlet, into Stephens Passage passing Grand Island to either port or starboard (Skipper's choice), finishing at the entrance to Taku Harbor on an imaginary line bearing 030 magnetic to, and within $\frac{1}{2}$ mile of the Grave Point Day Mark. Boats will dock/anchor overnight in Taku Harbor.



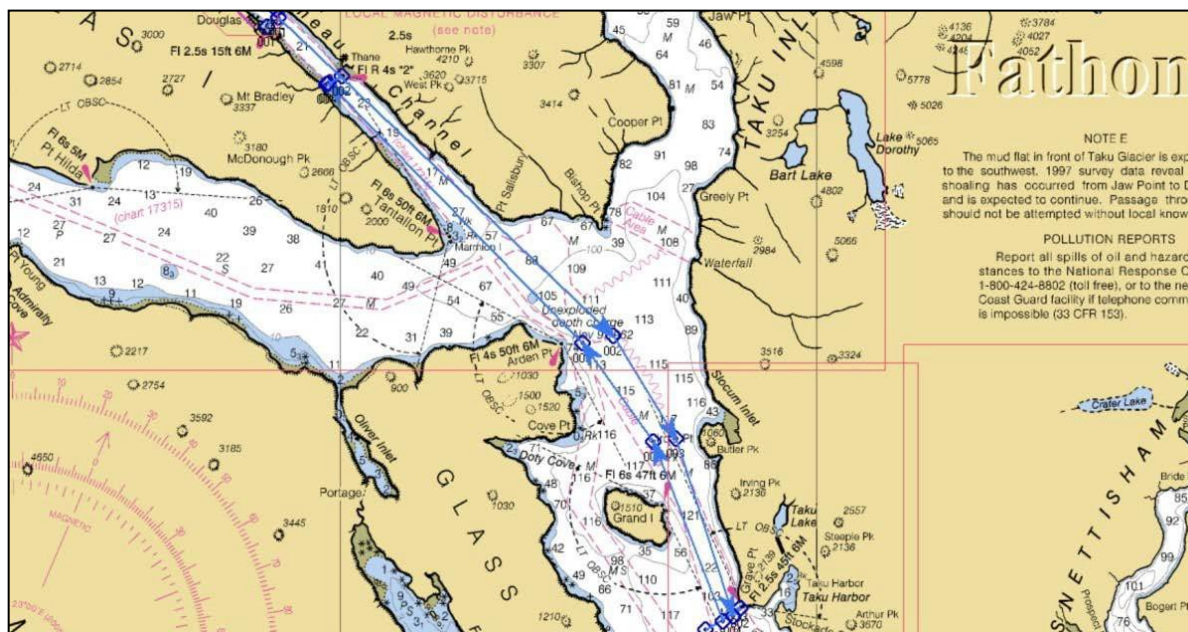
Leg 2 (Sunday) - Starting at 10:00 a.m. at the entrance to Taku Harbor, between the Committee Boat and the Grave Point day mark (for late arrivals on an imaginary line bearing 030 magnetic to, and within $\frac{1}{2}$ mile of the mark), proceed south down Stephens Passage towards Twin Points, crossing a line between



the two points, and returning to Taku Harbor finishing on the same start line & distance to the Mark.



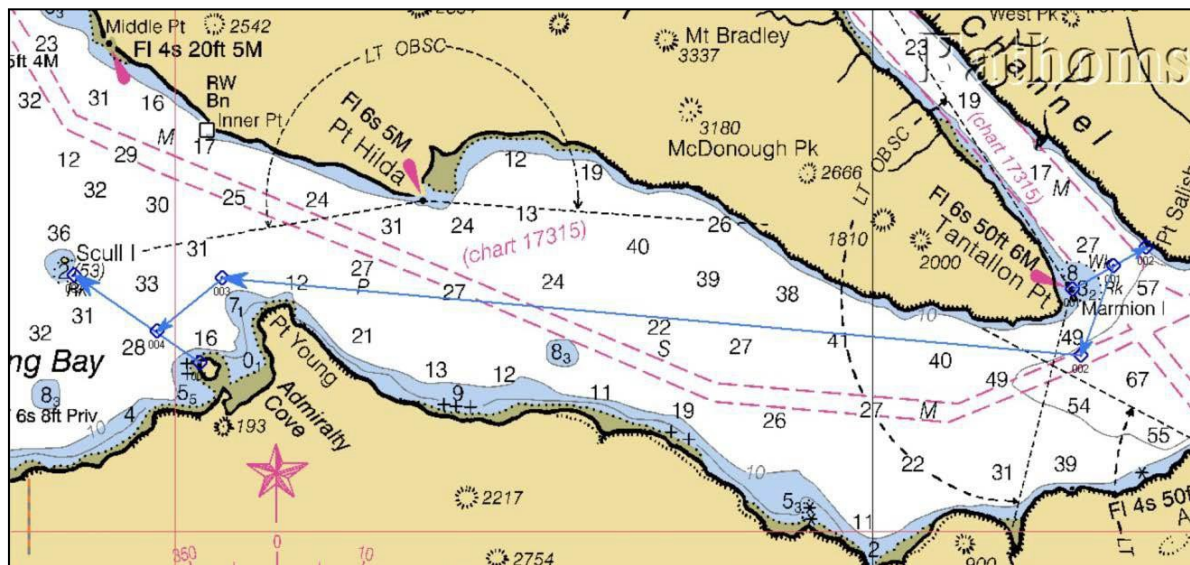
Leg 3 (Monday) – Starting at 9:30 a.m. at the entrance to Taku Harbor, between the Committee Boat and the Grave Point day mark (for late arrivals on an imaginary line bearing 030 magnetic to, and within ½ mile of the mark), reverse course of leg 1. Finish on an imaginary line bearing 020 magnetic to Sheep Creek Light in Gastineau Channel (line up the Sheep Creek Light with the midpoint of the Sheep Creek Bridge).





proceed north into Stephens Passage, down the back side of Douglas Island, finishing within ½-mile of the small island just past Point Young in Admiralty Cove, on an imaginary line bearing 280 magnetic to Scull Island. Plan to anchor in Admiralty Cove overnight, with beach bonfire (weather permitting).

Leg 2 (Sunday) - Starting at 10:00 a.m., reverse course of leg 1.

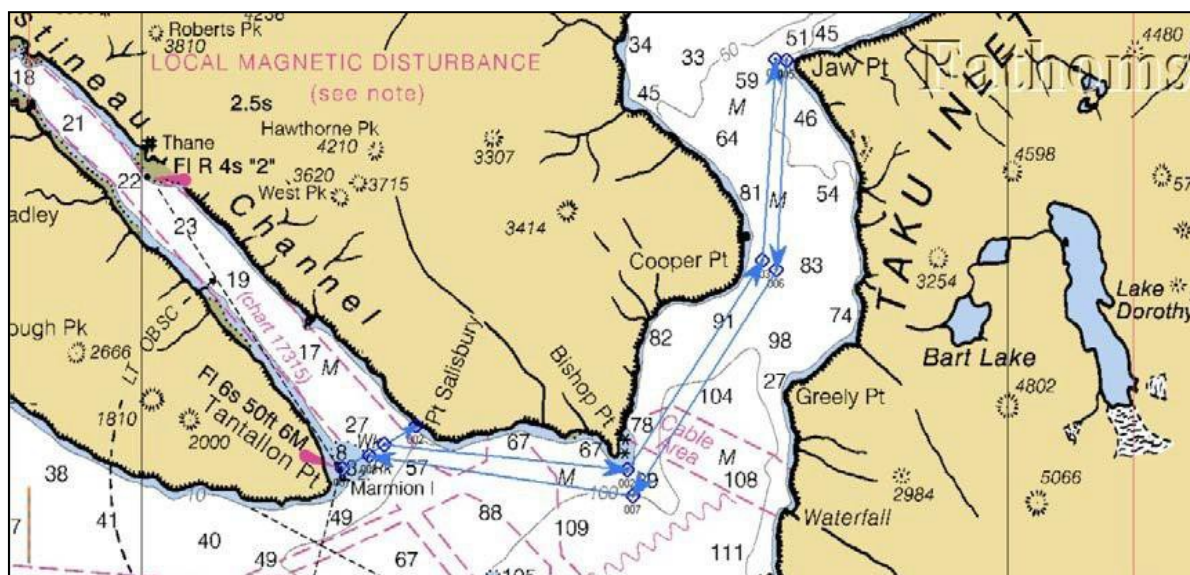


Round 5: Skipper's Choice #2- 1 Leg

Saturday July 10, 2021

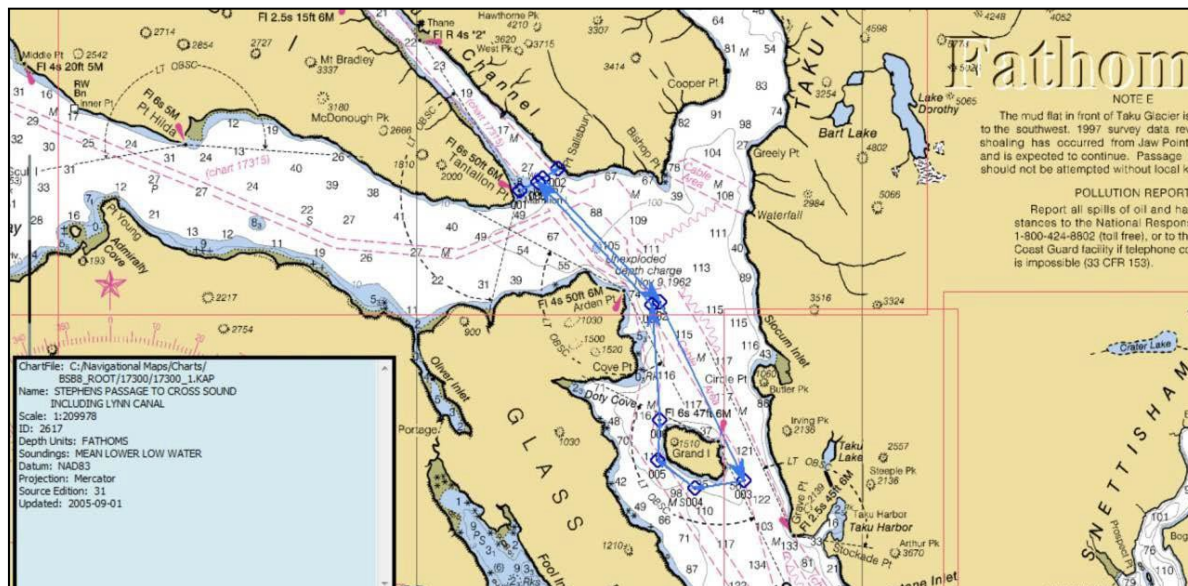
Starting at 10:00 a.m. between the Committee boat and the Marmion Island Day Mark (an imaginary line bearing 060 magnetic to, and within ½ mile of the mark), the boats will sail **ONE** of these courses:

- A. North into Taku Inlet, crossing an imaginary line bearing 60 magnetic to, and within ½ mile of Jaw Point, returning and crossing an imaginary line bearing 060 magnetic to, and within ½ mile of the Marmion Island Day mark.

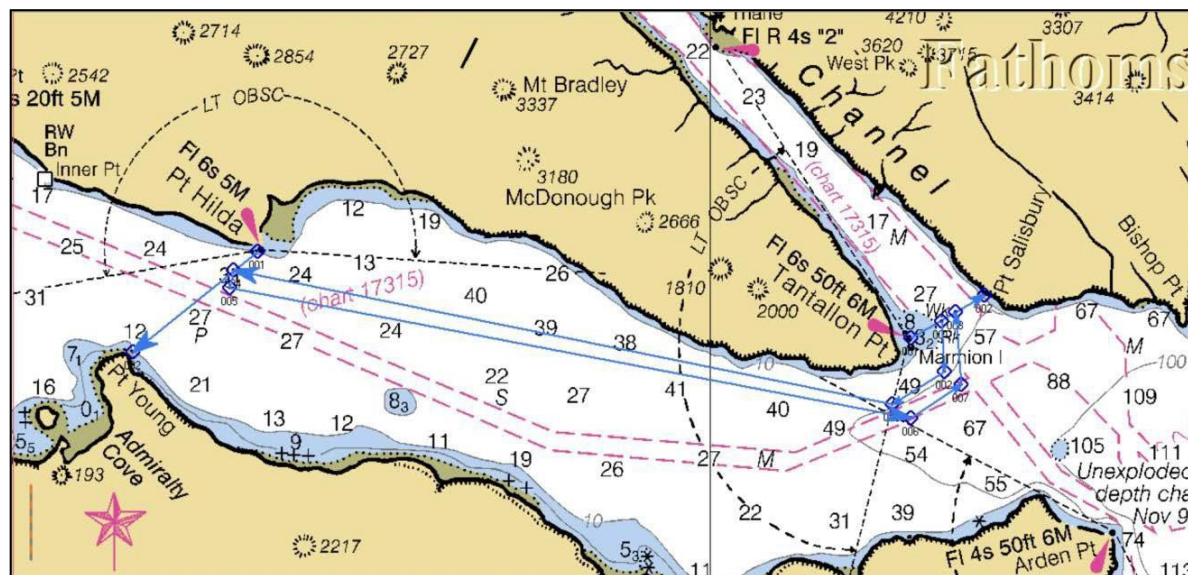




- B. South into Stephens Passage, rounding Grand Island to either port or starboard (Skipper's choice), returning and crossing an imaginary line bearing 060 magnetic to, and within ½ mile of the Marmion Island Day mark.



- C. West into Stephens Passage, crossing an imaginary line between Pt. Hilda and Pt. Young, returning and crossing an imaginary line bearing 060 magnetic to, and within ½ mile of the Marmion Island Day mark.



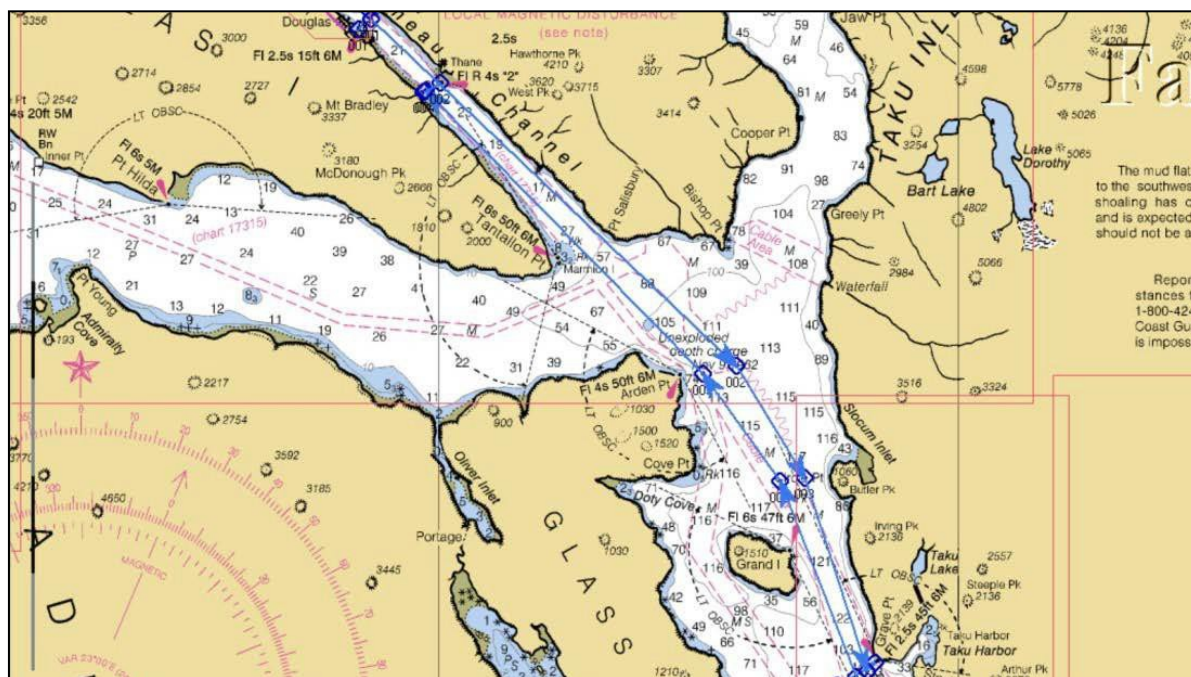
Round 6: Taku Harbor Rendezvous – 3 Legs

July 24-25, 2021

Leg 1 (Friday) - Starting at 9:30 a.m. between the Committee Boat (the last satellite earth station at the end of the Rock Dump) and the Mayflower Island Day Mark, proceed south down Gastineau Channel, then south across Taku Inlet, into Stephens Passage passing Grand Island to either port or starboard (Skipper's choice), finishing at the entrance to Taku Harbor on an imaginary line bearing 030 magnetic to,

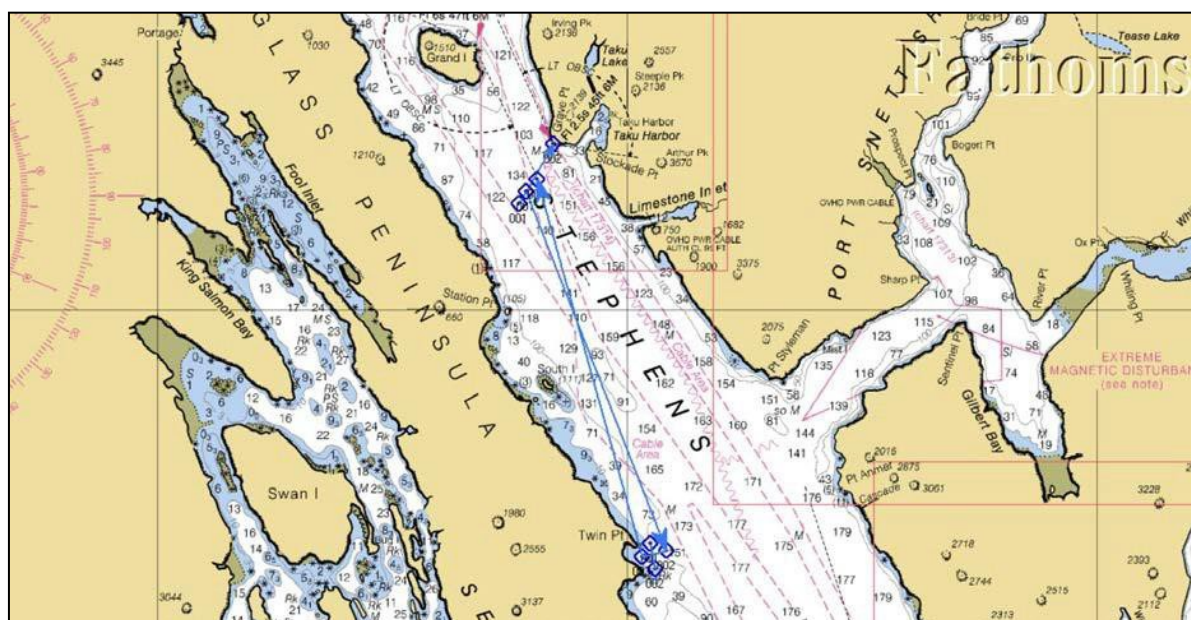


and within ½ mile of the Grave Point Day Mark. Boats will dock/anchor overnight in Taku Harbor.



Leg 2 (Saturday) - Starting at 10:00 a.m. at the entrance to Taku Harbor, between the Committee Boat and the Grave Point day mark (for late arrivals on an imaginary line bearing 030 magnetic to, and within

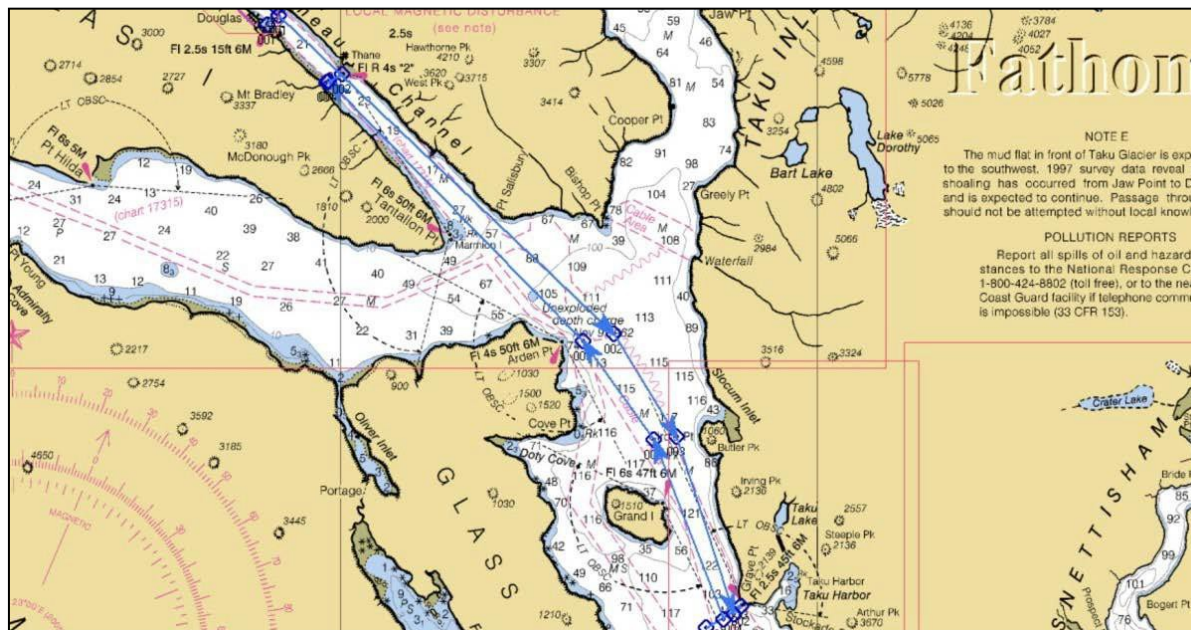
½ mile of the mark), proceed south down Stephens Passage towards Twin Points, crossing a line between the two points, and returning to Taku Harbor finishing on the same start line & distance to the Mark.



Leg 3 (Sunday) – Starting at 9:30 a.m. at the entrance to Taku Harbor, between the Committee Boat and the Grave Point day mark (for late arrivals on an imaginary line bearing 030 magnetic to, and within ½



mile of the mark), reverse course of leg 1. Finish on an imaginary line bearing 020 magnetic to Sheep Creek Light in Gastineau Channel (line up the Sheep Creek Light with the midpoint of the Sheep Creek Bridge).

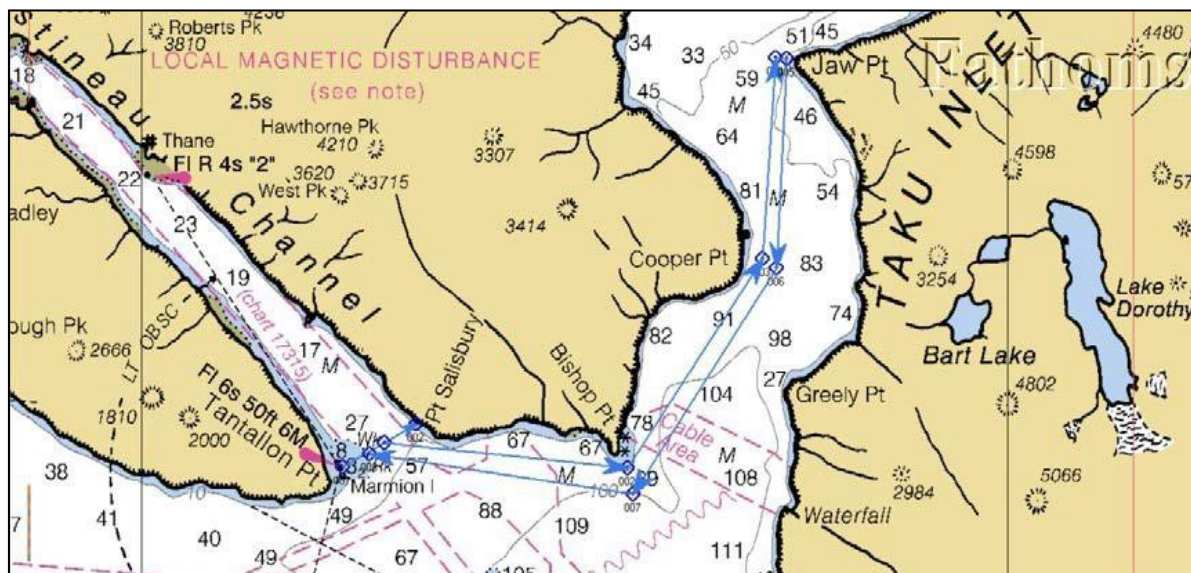


Round 7: Skipper's Choice #3- 1 Leg

Saturday August 7, 2021

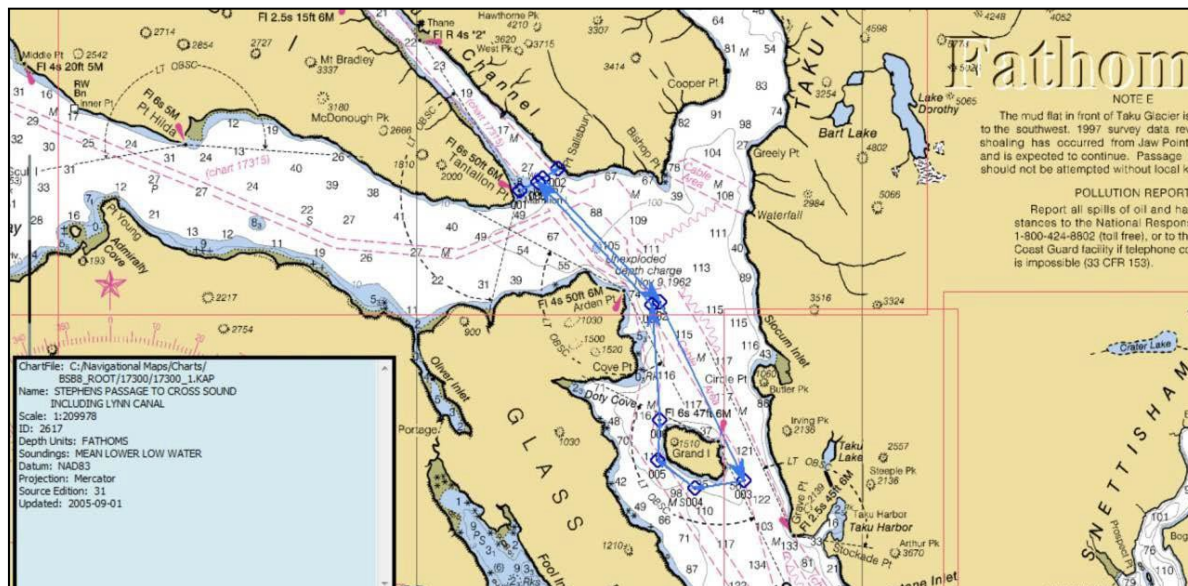
Starting at 10:00 a.m. between the Committee boat and the Marmion Island Day Mark (an imaginary line bearing 060 magnetic to, and within $\frac{1}{2}$ mile of the mark), the boats will sail **ONE** of these courses:

- A. North into Taku Inlet, crossing an imaginary line bearing 60 magnetic to, and within $\frac{1}{2}$ mile of Jaw Point, returning and crossing an imaginary line bearing 060 magnetic to, and within $\frac{1}{2}$ mile of the Marmion Island Day mark.

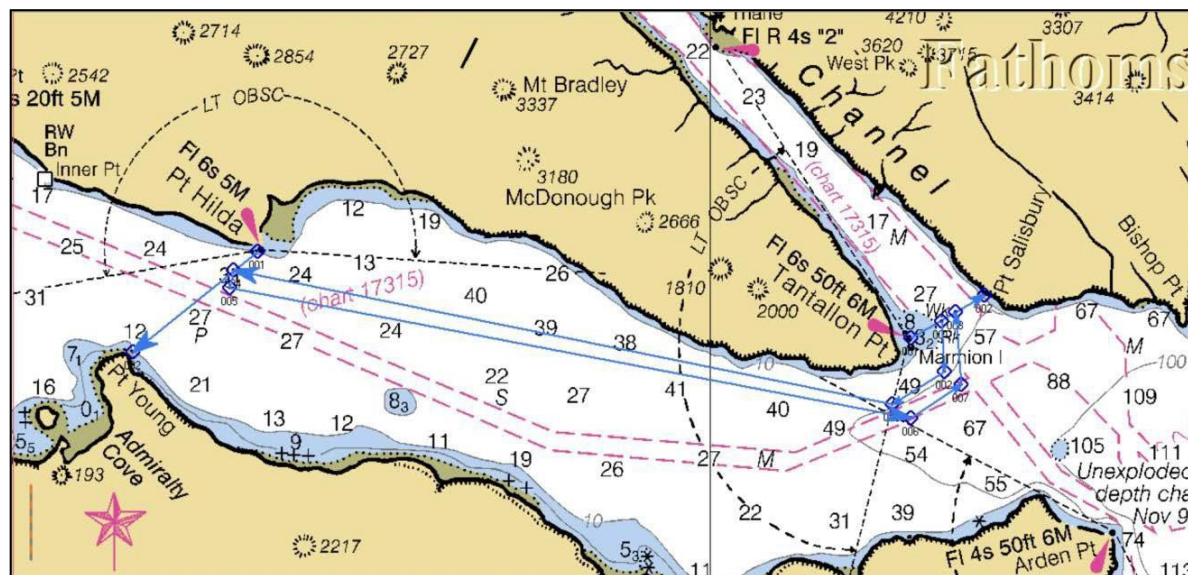




- B. South into Stephens Passage, rounding Grand Island to either port or starboard (Skipper's choice), returning and crossing an imaginary line bearing 060 magnetic to, and within ½ mile of the Marmion Island Day mark.



- C. West into Stephens Passage, crossing an imaginary line between Pt. Hilda and Pt. Young, returning and crossing an imaginary line bearing 060 magnetic to, and within ½ mile of the Marmion Island Day mark.



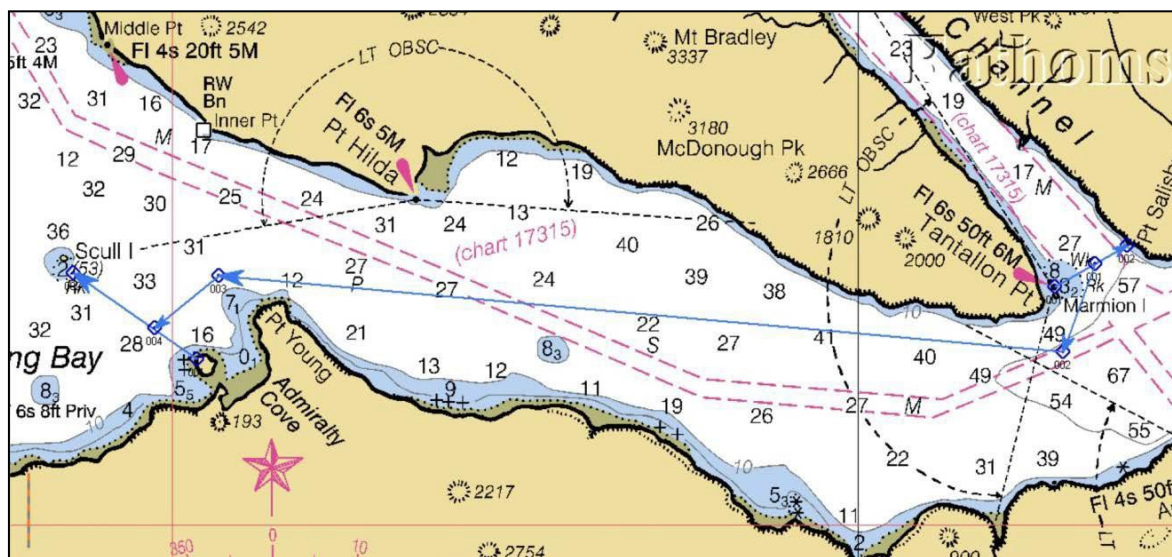
Round 8: Admiralty Cove Race #2 - 2 Legs

August 21-22, 2021

Leg 1 (Saturday) - Starting at 10:00 a.m. between the Committee boat and the Marmion Island Day Mark, proceed north into Stephens Passage, down the back side of Douglas Island, finishing within ½-mile of the small island just past Point Young in Admiralty Cove, on an imaginary line bearing 280 magnetic to Scull Island. Plan to anchor in Admiralty Cove overnight, with beach bonfire (weather permitting).



Leg 2 (Sunday) - Starting at 10:00 a.m., reverse course of leg 1.

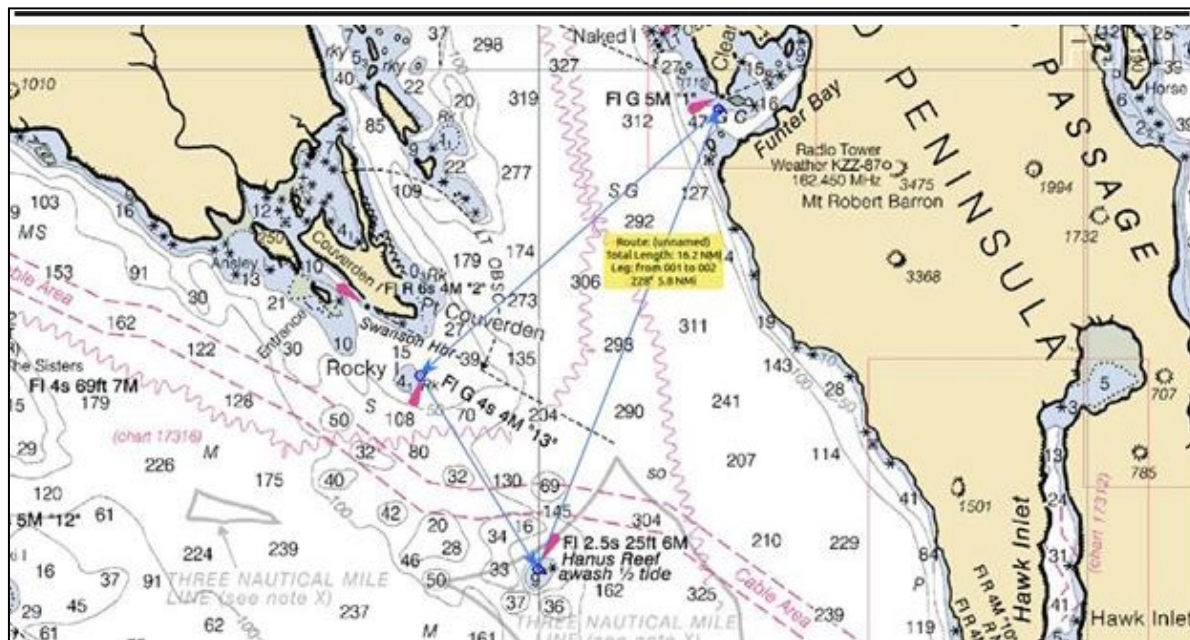


Round 9: Labor Day Regatta - Funter Bay - 3 legs

September 4 - September 6, 2021

Leg 1 (Saturday) – Starting in Favorite Channel at 9:30 a.m. between the Committee boat and the North light on Portland Island (an imaginary line bearing 195 magnetic to, and within ½ mile of the mark), proceed north, keeping Strauss Rock to starboard, into Saginaw Channel, rounding Pt. Retreat into Lynn Canal, finishing in Funter Bay on an imaginary line bearing 62 magnetic, and within a ½ mile of Clear Point.

Leg 2 (Sunday) – Starting line is an imaginary line off Clear Point bearing 62 magnetic head south to Rocky Island taking the island to the port and heading further south to round Hanus Reef Light to the port and returning to the start line off Funter Bay.

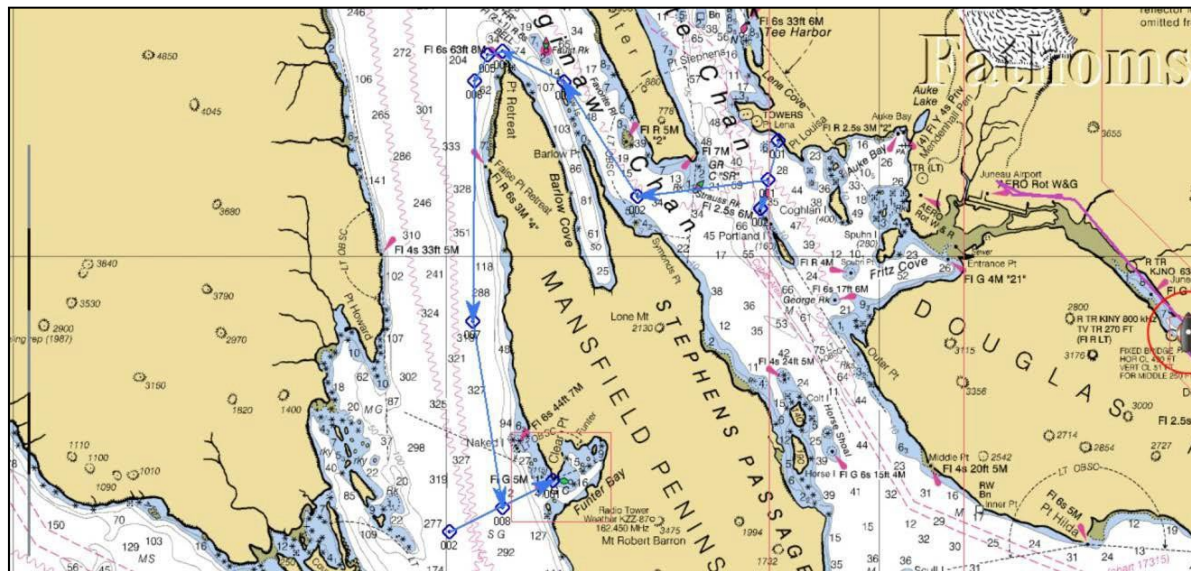




SouthEast Alaska Sailing

P. O. Box 240166 • Douglas, Alaska 99824 • 907-723-1730 • www.seasailing.us

Leg 3 (Monday) – Starting at 9:30 a.m. between the Committee boat and Clear Point, sail the same course as Leg 1 finishing in Favorite Channel on an imaginary line bearing 195 magnetic to, and within a ½ mile of the north light on Portland Island.



Handicapping:

All vessels will be handicapped using the PHRF-NW handicap system.

Scoring:

The series will be scored by the low-point scoring system according to US Sailing's *The Racing Rules of Sailing (2017-2020)*, Appendix A.

The highest 5 scores for each boat will be thrown out.